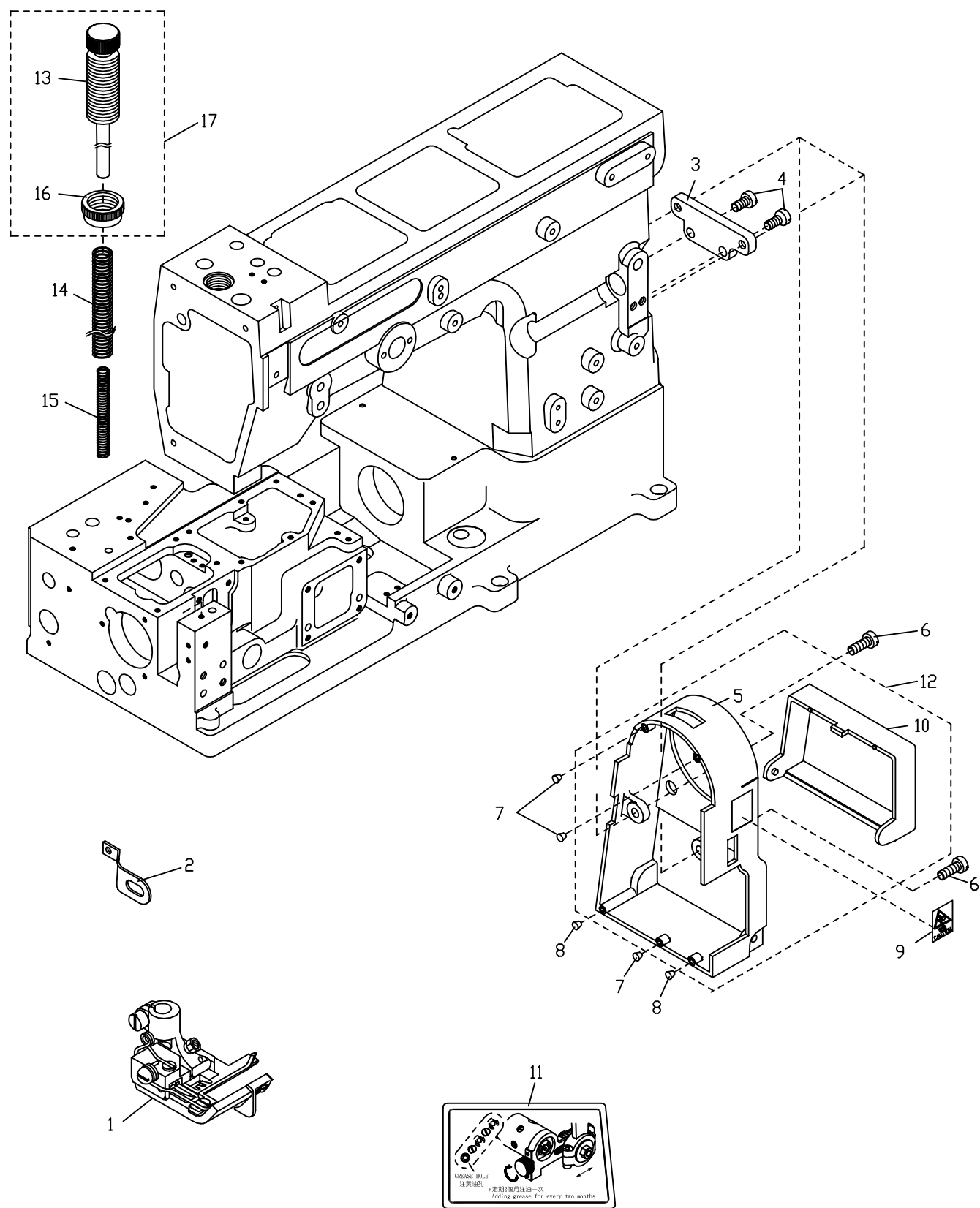


1. FT6539-1/FT7039-1/FT7069-1 壓腳, 針板, 送布齒及各項護蓋
Press Foot ,Needle Plate ,Feed Dog And Conservation Covers



序號 Ref.No.	名稱 Description	針距 Distance Of Needles	
		5.6	6.4
1	壓腳 Presser Foot	5221PF39561	5221PF39640

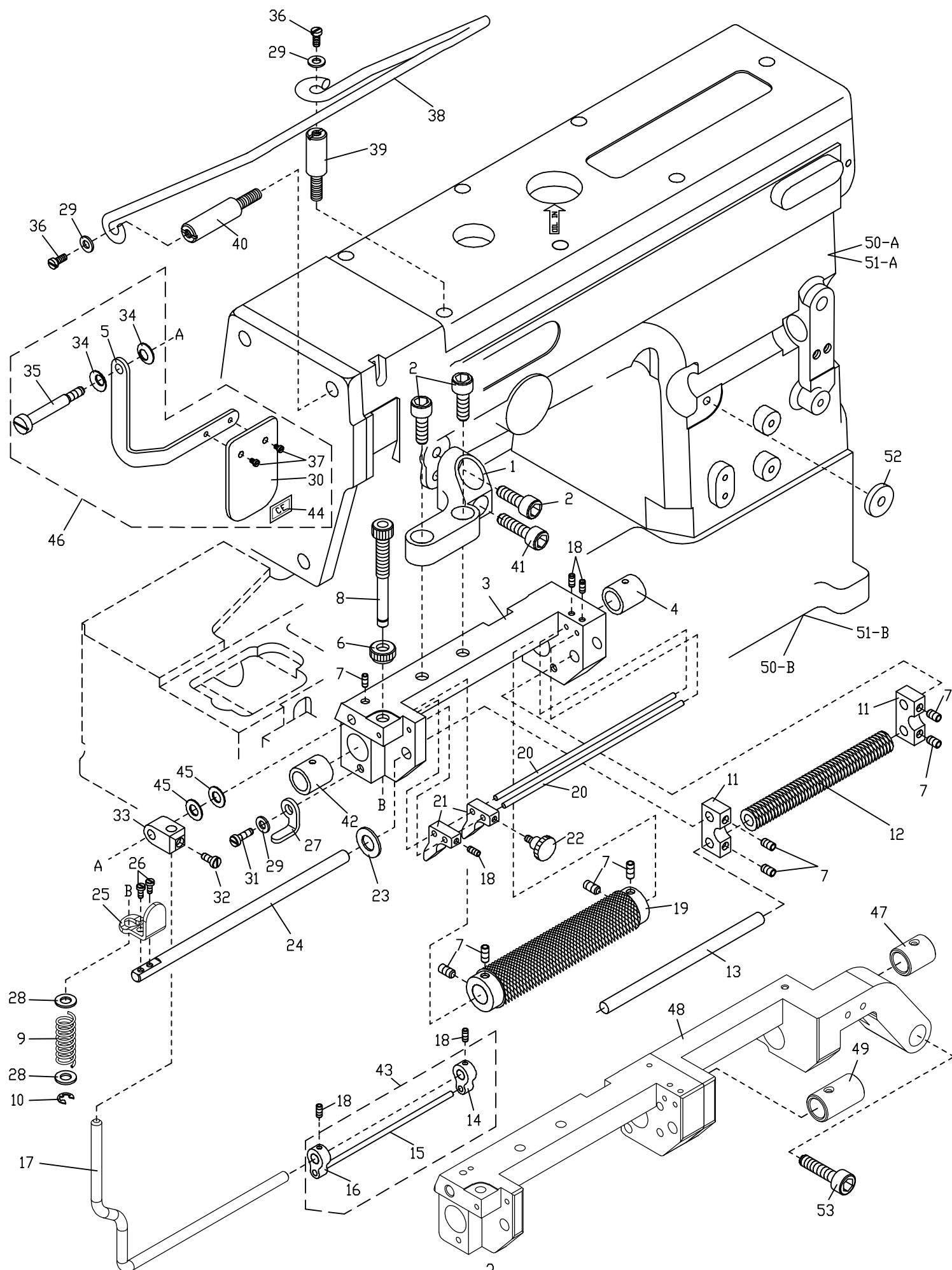
1. FT6539-1/FT7039-1/FT7069-1 壓腳,針板,送布齒及各項護蓋列表

Press Foot, Needle Plate, Feed Dog And Conservation Covers

Ref.No. 序號	Parts No. 物料編號	Description 名 稱	Amt. Req. 單位用量
1	-----	壓腳 Presser Foot Asm -----	1
2	2210390129	護指環 Safety Plate Holder -----	1
3	2210390120	承座 Seat -----	1
4	2210390123	螺絲 Screw -----	2
5	2210390121	連桿護罩 Cover -----	1
6	2210390124	螺絲 Screw -----	2
7	2210390139	減震橡膠 Rubber Cushion -----	3
8	2210390125	減震橡膠 Rubber Cushion -----	2
9	2210390127	貼紙 Label -----	1
10	2210390122	護蓋 Cover -----	1
11	22103901261	貼紙 Label -----	1
12	221A0390140	連桿護罩組 Cover Asm.-----	1
*13	2280690145	壓力調整螺椿 Spring Regulator -----	1
*14	2280690146	彈簧 Spring -----	1
*15	2280690147	彈簧 Spring -----	1
16	2220000803	螺帽 Nut -----	1
17	228A0690148	壓力調整螺椿組 Spring Regulator Asm. -----	1

* : For FT7069-1 用

2. FT7069 / FT7069-1 / FT7069-4 / FTD7069-4 送鬆緊帶傳送機構 (A) Metering Device Mechanism Components (A)



2. FT7069 / FT7069-1 / FT7069-4 / FTD7069-4 送鬆緊帶傳送機構列表 (A)

Metering Device Mechanism Components (A)

序號 Ref.No.	物料編號 Parts No.	名 稱 Description	單位用量 Amt. Req.
1	2210390301	支架 Roller Holder Bracket -----	1
2	8MM06401610A	螺絲 Screw (CT0625 M6-1*16)-----	3
△3	2280690303	滾輪支架 Roller Holder -----	1
△4	2210090304	軸襯 Bushing -----	1
5	2210390305	護目鏡架 Safety Plate Holder -----	1
6	2280690306	調整螺帽 Adjusting Nut -----	1
7	8MN04280400A	螺絲 Screw (CT0229 M4-0.7*4)-----	9
8	2280690308	調節螺樁 Stud -----	1
9	2280690309	彈簧 Spring -----	1
10	90ER040	E型扣環 E-Ring -----	1
11	2210090311	從動滾輪臂 Arm -----	2
12	2210090312	從動滾輪 Tension Roller -----	1
13	2210090313	軸 Shaft -----	1
14	2210090314	右導模 Tape Guide(R) -----	1
15	2210090315	導模滑桿 Tape Guide Bar -----	1
16	2210090316	左導模 Tape Guide(L) -----	1
17	2280690317	導模承桿 Tape Guide Support Bar -----	1
18	8MN03200300A	螺絲 Screw (CT0115 M3-0.5*3) -----	5
19	2210090319	主動滾輪 Feeding Roller -----	1
20	2210090320	導模導桿 Tape Guide Bar -----	2
21	2280690321	導模 Tape Guide -----	2
22	2210090322	固定螺樁 Knob Screw Stud -----	1
23	2200000910	墊圈 Washer -----	1
24	2280690324	軸 Tension Link Shaft -----	1
25	2280690325	釋壓板手 Press Release -----	1
26	8MB03200606K	螺絲 Screw (CT1207 M3-0.5*6) -----	2
27	2280690327	限位片 Holder -----	1
28	2200001025	墊圈 Washer -----	2
29	2100000223	墊圈 Washer (W3) -----	3
30	2200001622	護目鏡 Safety Plate -----	1
31	8MB04281007K	螺絲 Screw (CT1237 M4-0.7*10) -----	1
32	8SB48280808A	螺絲 Screw (S0119 3/16"-28*8) -----	1
33	2210090333	接頭 Joint -----	1
34	2200000228	彈簧墊圈 Conical Spring Washer (CT0228) -----	2
35	8MB04283809E	螺樁 Stud (CT0227 M4-0.7*38) -----	1
36	8MC04281207D	螺絲 Screw(CT0102 M4-0.7*12) -----	2
37	8MB03200405A	螺絲 Screw (FT0548 M3-0.5*4) -----	2
38	4TB0000101	帶架 Tape Holder (FTB0101)-----	1
39	2210600116	螺樁 Stud (FT600116) -----	1
40	4TB0000103	螺樁 Stud (FTB0103) -----	1
41	8MM06402010A	螺絲 Screw (SH0444 M6-1*20) -----	1
42	2210390342	軸襯 Bushing -----	1
43	221A0090341	導模滑桿組 Tape Guide Bar Asm.-----	1
44	66451	貼紙 Paster -----	1
45	2200001025	墊圈 Washer -----	2
46	221A0390346	護目鏡組 Safety Plate Asm. -----	1
◎47	2230690347	軸襯 Bushing -----	1
◎48	2230690303	滾輪支架 Roller Holder -----	1
◎49	2230690304	軸襯 Bushing -----	1
** 50	2230690350	車頭 Frame Unit -----	1
** 50-A	2230690350A	車頭上座 Frame Unit -----	1
** 50-B	2280000128B	車頭下座 Frame Unit -----	1
* 51	2280690351	車頭 Frame Unit -----	1
* 51-A	2280690351A	車頭上座 Frame Unit -----	1
* 51-B	2280000128B	車頭下座 Frame Unit -----	1
*52	2280690352	墊圈 Washer -----	1
◎53	8MM05322209X	螺絲 Screw (NT01219 M5-0.8*22) -----	1

* : FT7069-4 用

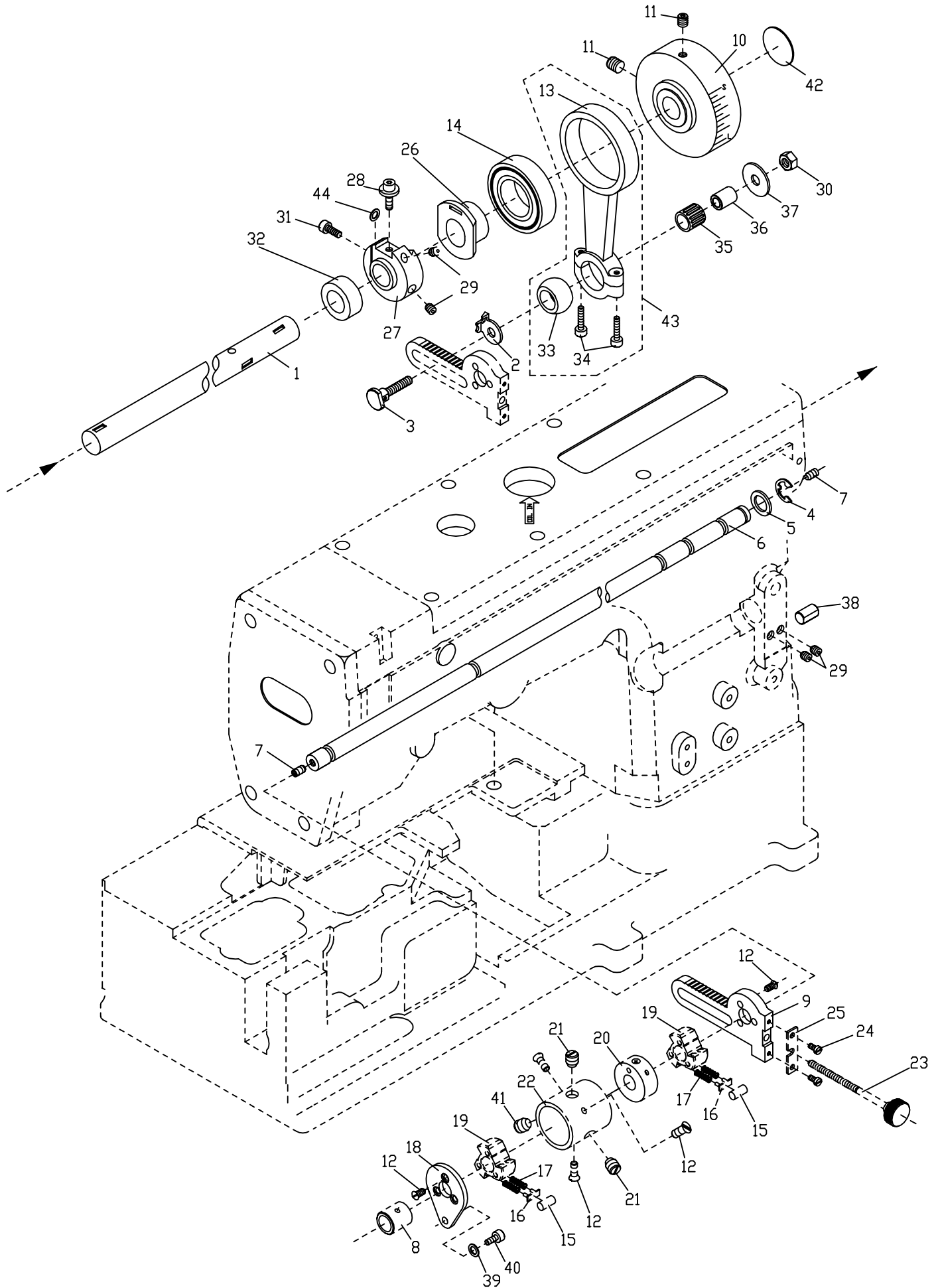
** : FTD7069-4 用

◎ : FT7069-4 / FTD7069-4 用

△ : FT7069 / FT7069-1 用

3. FT7069 / FT7069-1 / FT7069-3 送鬆緊帶傳送機構 (B)

Metering Device Mechanism Components (B) For FT7069 / FT7069-1 / FT7069-3

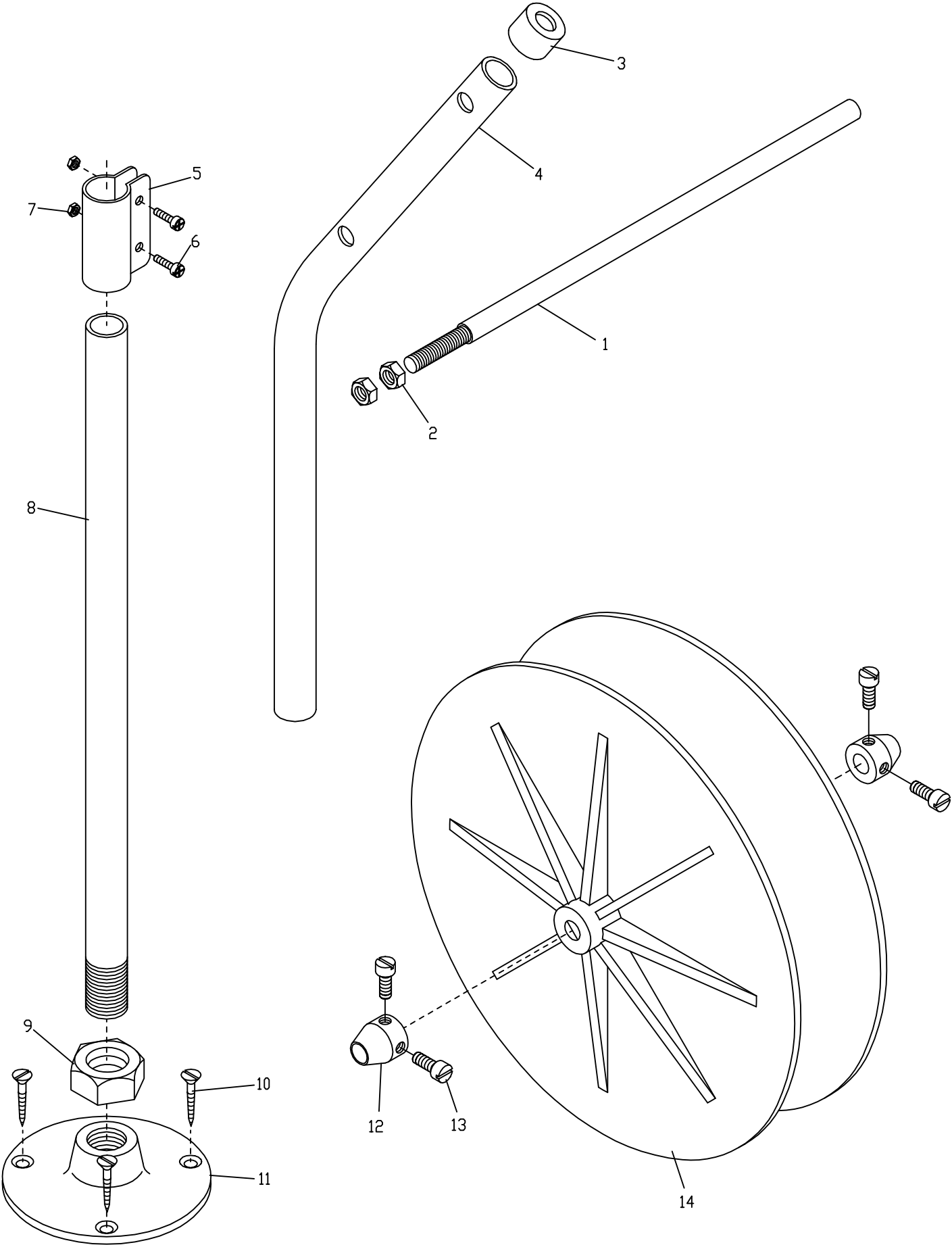


3. FT7069 / FT7069-1 / FT7069-3 送鬆緊帶傳送機構列表 (B)

Metering Device Mechanism Components (B) For FT7069 / FT7069-1 / FT7069-3

序號 Ref.No.	物料編號 Parts No.	名 稱 Description	單位用量 Amt. Req.
1	2210390401	軸 Roller Shaft -----	1
2	2210390402	指標墊圈 Pointer -----	1
3	2210390403	連桿銷 Connect Pin -----	1
4	90ER080	E形扣環 E Ring -----	1
5	2210390405	墊圈 Washer -----	1
6	22806904061	軸 Shaft -----	1
7	8MN06400500A	螺絲 Screw (C0513 M6-1*5)-----	2
8	2210090408	軸襯 Bushing -----	1
9	2210390409	離合器連桿 Clutch Lever -----	1
10	2210390410	手輪 Handwheel -----	1
11	8MN06400800A	螺絲 Screw (CT0549 M6-1*8) -----	2
12	8SF36400606A	螺絲 Screw(RP0217 9/64"-40*7) -----	9
13	2210390413	連桿 Rod -----	1
14	90BB2547127	滾珠軸承 Bearing -----	1
15	4RP0010225	離合器滾柱 Clutch Roller -----	6
16	4RP0010224	滾柱承座 Clutch Roller Base -----	6
17	4RPC030222	彈簧 Clutch Spring -----	12
18	2210390418	離合器制動板 Clutch Plate -----	1
19	4RP00102211	離合器 Clutch -----	2
20	2210090420	內環 Clutch Sleeve Collar -----	1
21	8MN06400800A	螺絲 Screw(CT0549 M6-1*8) -----	2
22	2210090422	外環 Clutch Sleeve -----	1
23	2210090423	調整螺絲 Adjusting Screw -----	1
24	8MB03200606K	螺絲 Screw (CT1207 M3-0.5*6) -----	2
25	2210390425	止動片 Stopper -----	1
26	2210390426	滑塊 Upper Feed Roller Eccentric -----	1
27	4RP0010323	滑軌 Upper Feed Roller Regulator -----	1
28	2210390428	調整螺絲 Adjusting Screw -----	1
29	8MN05320500E	螺絲 Screw (CT0903 M5-0.8*5) -----	4
30	8MA06400510A	螺帽 Nut (CT0533 M6-1*5) -----	1
31	8MM04281007A	螺絲 Screw(F02-03 M4-0.7*10) -----	1
32	2210390432	隔環 Spacer -----	1
33	2210390433	萬向肘 Ball -----	1
34	2210390434	螺絲 Screw -----	1
35	90NB101313	滾針軸承 Needle Bearing -----	1
36	2210390436	襯套 bushing -----	1
37	2210390437	墊圈 Washer -----	1
38	2210390438	懸臂軸 Shaft -----	1
39	2100000223	墊圈 Washer (W3) -----	1
40	8MM04281007A	螺絲 Screw (FT0203 M4-0.7*10) -----	1
41	8MN06400400A	螺絲 Screw (FT390441 M6-1*4) -----	1
42	66480-11	銘板 Plate -----	1
43	221A0390443	連桿組Connecting Rod Asm -----	1
44	2100000640	墊圈 Washer -----	1

4. TS003 滾條架 Tape Stand



4. TS003 滾條架 Tape Stand

序號 Ref.No.	物料編號 Parts No.	名 稱 Description	單位用量 Amt. Req.
1	4TS0030101	軸 Shaft -----	1
2	8SA79180613A	螺絲 Screw (CT1514 5/16"-18*6) -----	2
3	4TS0060103	柱帽 Rod Cup -----	1
4	4TS0060104	上柱 Upper Thread Stand Rod -----	1
5	4TS0060105	接頭 Bracket -----	1
6	8SC48321708D	螺絲 Screw -----	2
7	8SA48320409B	螺帽 Nut -----	2
8	4TS0060108	下柱 Lower Thread Stand Rod -----	1
9	4TS0060109	螺帽 Nut -----	1
10	8WF50202210A	木螺絲 Wood Screw -----	3
11	4TS0060111	座 Stand Base -----	1
12	4TS0030112	限動環 Stop Collar -----	2
13	8SH56320500A	螺絲 Screw -----	4
14	4TS0050101	承盤 Plastic Plate -----	2