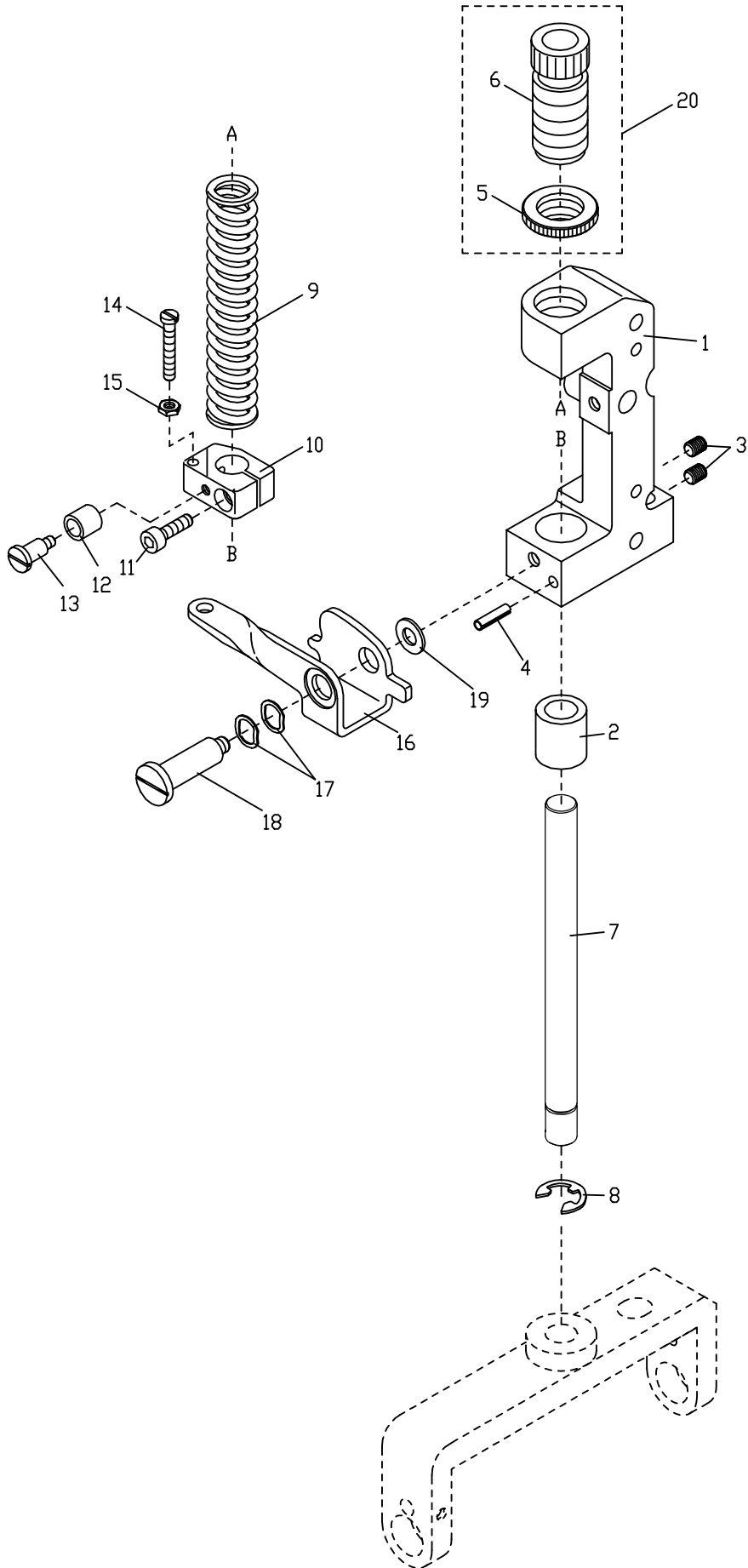


1. MP001/TCB42 輔助拖輪 Puller Mechanism For MP001/TCB42

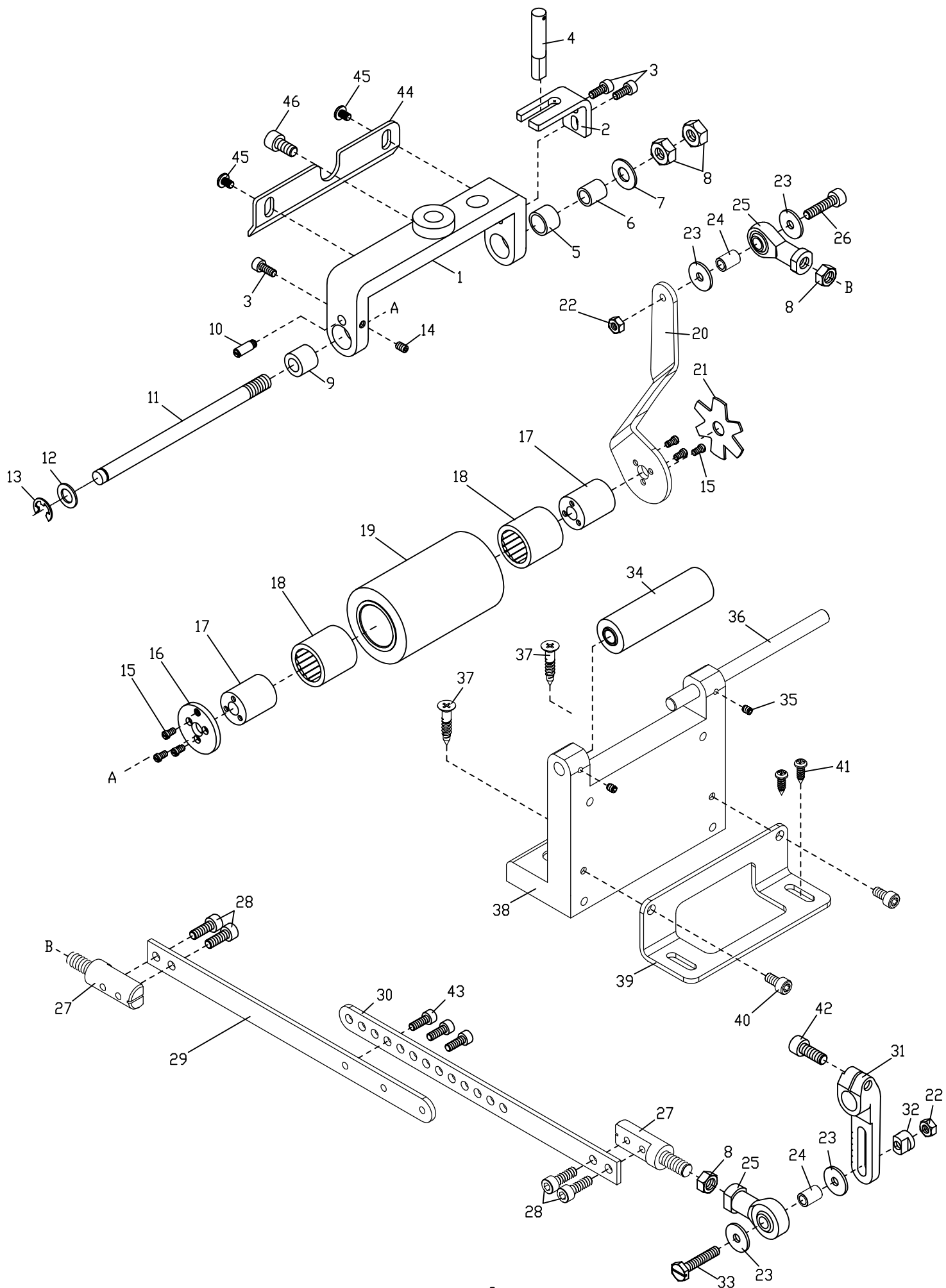


1. MP001 / TCB42 輔助拖輪 Puller Mechanism For MP001 / TCB42

序號 Ref.No.	物料編號 Parts No.	名稱 Description	單位用量 Amt .Req.
1	4MP0010101	機架 Upper Feed Roller Bracket -----	1
2	4RP0010102	軸襯 Roller Press Bar Bushing -----	1
3	8MN06400500A	螺絲 Screw (C05-13 M6-7*5) -----	2
4	90SP0416	止動梢 Stop Pin -----	1
5	2310001222	螺帽 Nut -----	1
6	2310001221	調壓螺椿 Spring Regulator -----	1
7	4MP0010107	軸 Upper Feed Rrller Press Bar -----	1
8	90ER100	扣環 Retaining Ring -----	1
9	4RP0010109	壓力彈簧 Roller Press Spring -----	1
10	4RP0010110	彈簧座 Roller Press Bar Bracket -----	1
11	8MM05321609A	螺絲 Screw (RP0111 M5-0.8*16) -----	1
12	4RP0010112	套管 Lifting Lever Sleeve -----	1
13	8SB44401510G	螺椿 Stud (RP0113 11/64"-40*14.6) -----	1
14	8SB44403006A	螺絲 Screw (RP0114 11/64"*30) -----	1
15	8SA44400307A	螺帽 Nut (SH0914 11/64"-40*2.5) -----	1
16	4RP0010116	揚昇手柄 Upper Feed Roller Lifting Lever -----	1
17	90WW105	波形墊圈 Corrugated Washer -----	2
18	8MB06403516G	螺椿 Stud (RP0118 M6-1*35) -----	1
19	2100000645	墊圈 Washer -----	1
20	231A0001244	調壓螺椿組 Spring Regulator Asm.-----	1

註：MP001 / TCB42 用於 MT4500 機型

2. TCB42 後拉引式拖輪裝置 Rear Puller For TCB42

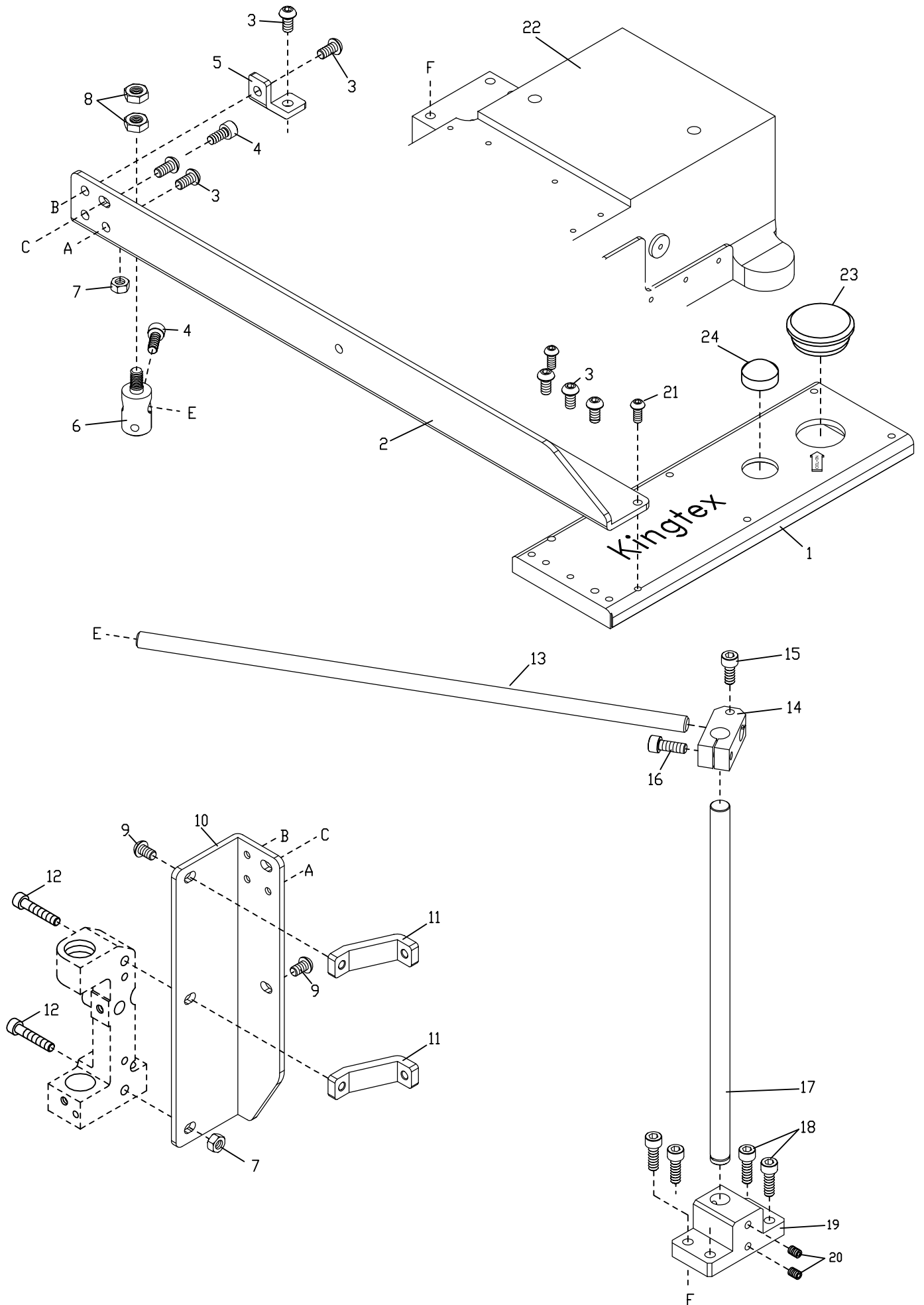


2. TCB42 輔助拖輪 Puller Mechanism For TCB42

序號 Ref.No.	物料編號 Parts No.	名稱 Description	單位用量 Amt .Req.
◎1	4MP0010201	主動輪座 Upper Feed Roller Yoke -----	1
2	4MP0010202	導軌 Yoke Guide -----	1
3	8MM04281007A	螺絲 Screw (FT0203 M4-0.7*10) -----	3
4	4MP0010204	軸 Yoke Pin -----	1
◎5	2310001307	軸襯 Bushing -----	1
6	2310001306	襯套 Clutch Tension Sleeve -----	1
7	2310001301	墊圈 Washer -----	1
8	8MA08500613A	螺帽 Nut (RP10208 M8-1.25*6) -----	4
◎9	2310001308	軸襯 Bushing -----	1
10	8SB44400305N	螺絲 Screw (MT1329 11/64"-40*3) -----	1
11	2310001417	軸 Shaft -----	1
12	2310001302	墊圈 Washer -----	1
13	90ER070	E形扣環 E Ring -----	1
14	8MN04280600A	螺絲 Screw (CT1223 M4-0.7*6) -----	1
15	8SB32440604A	螺絲 Screw (MT1332 1/8"-44*6) -----	6
16	2310001305	封蓋 Cover -----	1
◎17	23100013042	離合器 Clutch -----	2
◎18	90NB202626	單向滾針軸承 Needle Bearing (HLF2026) -----	2
◎19	2310001437	主動輪 Upper Feed Roller (0 齒) -----	1
20	4TCB420220	拉柄 Clutch Driving Lever -----	1
21	2310001303	星形壓環 Clutch Tension Spring -----	1
22	8MA05320408A	螺帽 Nut (CT1028 M5-0.8*4) -----	2
23	2310001309	墊圈 Washer -----	4
24	4MP0010224	襯套 Clutch Tension Sleeve -----	2
25	4UTB010326	球軸連桿 Plunger Connecting Rod -----	2
26	8MM05322209X	螺絲 Screw (TC013-01-20 M5-0.8*22) -----	1
27	4MP0010227	螺樁 Stud -----	2
28	8MM05321409A	螺絲 Screw (C06-32 M5-0.8*14) -----	4
29	4MP0010229	連結桿 Connecting Rod -----	1
30	4MP0010230	連結桿 Connecting Rod -----	1
31	23100012061	拉臂 Upper Feed Roller Arm -----	1
32	2310001313	隔環 Spacer -----	1
33	8MK05322710A	螺絲 Screw (MT1326 M5-0.8*27) -----	1
34	2310001436	從動輪 Lower Feed Roller (0 齒) -----	1
35	8MN04280500A	螺絲 Screw (MT1334 M4-0.7*5) -----	2
36	4MP0010236	軸 Shaft -----	1
37	8WE37003200A	木螺絲 Wood Screw (MP001-02-37) -----	2
38	4MP0010238	從動輪座 Lower Feed Roller Yoke -----	1
39	4TCB420239	支架 Cylinder Holder Bracket -----	1
40	8MM05321009A	螺絲 Screw (CT06-26 M5-0.8*10) -----	2
41	8WD40001300A	木螺絲 Wood Screw (NT67-20-15) -----	2
42	8MM06401610A	螺絲 Screw (C06-25 M6-1*16) -----	1
43	8MM05320809A	螺絲 Screw (C11-45 M5-0.8*8) -----	3
44	2310001454	護蓋 Cover -----	1
45	8MB04280608A	螺絲 Screw (UTB0130 M4-0.7*6) -----	2
46	8MM06401210A	螺絲 Screw (FT1103 M6-1*12) -----	1

◎ 需整組購買 Must be sold in complete set

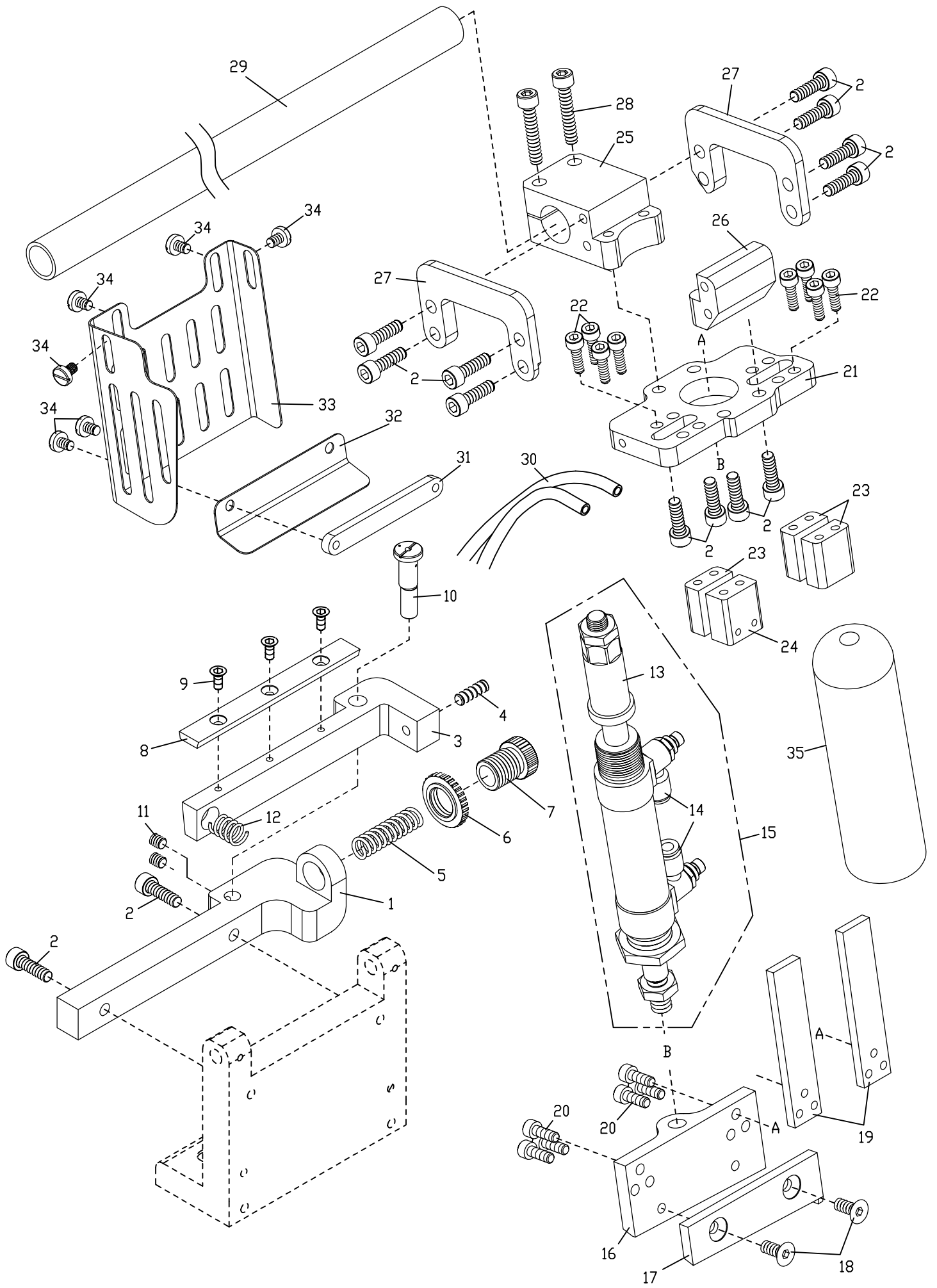
3. MP001/TCB42 輔助拖輪 Puller Mechanism For MP001/TCB42



3. MP001 / TCB42 輔助拖輪 Puller Mechanism For MP001 / TCB42

序號 Ref.No.	物料編號 Parts No.	名稱 Description	單位用量 Amt .Req.
1	4MP0010301	上軸蓋 Top Cover -----	1
2	4MP0010302	支架 Cylinder Holder Bracket -----	1
3	8MP06401211A	螺絲 Screw (UTB1-03-02 M6-1*12) -----	7
4	8MM06401510A	螺絲 Screw (MT0845 M6-1*15) -----	2
5	4MP0010305	支架 Cylinder Holder Bracket -----	1
6	4MP0010306	支架 Cylinder Holder Bracket -----	1
7	8MA06400510A	螺帽 Nut (C05-33 M5-0.8*5) -----	2
8	8MA08500513A	螺帽 Nut (FTC1-01-26 M8-1.25*5) -----	2
9	8MP06401011A	螺絲 Screw (M02-34 M6-1*10) -----	2
10	4MP0010310	支架 Cylinder Holder Bracket -----	1
11	4MP0010311	支架 Cylinder Holder Bracket -----	2
12	8MM06403210B	螺絲 Screw (RP0131 M6-1*32) -----	2
13	4MP0010313	軸 Shaft -----	1
14	4MP0010314	連桿 Lever -----	1
15	8MM06401610A	螺絲 Screw (C6-25 M6-1*16) -----	1
16	8MM06402010A	螺絲 Screw (S04-44 M6-1*20) -----	1
17	2310001219	軸 Shaft -----	1
18	8MM06402510A	螺絲 Screw (UH07-12 M6-1*25) -----	4
19	4MP0010319	承座 Bracket -----	1
20	8MN06401000A	螺絲 Screw (M12-33 M6-1*10) -----	2
21	8MP05321210A	螺絲 Screw (UTB1-03-40 M5-0.8*12) -----	2
22	4MP0010322	車頭下座 From Frame Unit -----	1
23	22000001051	孔塞 Plug (CT01051)-----	1
24	2310000113	油鏡 Oil Window -----	1

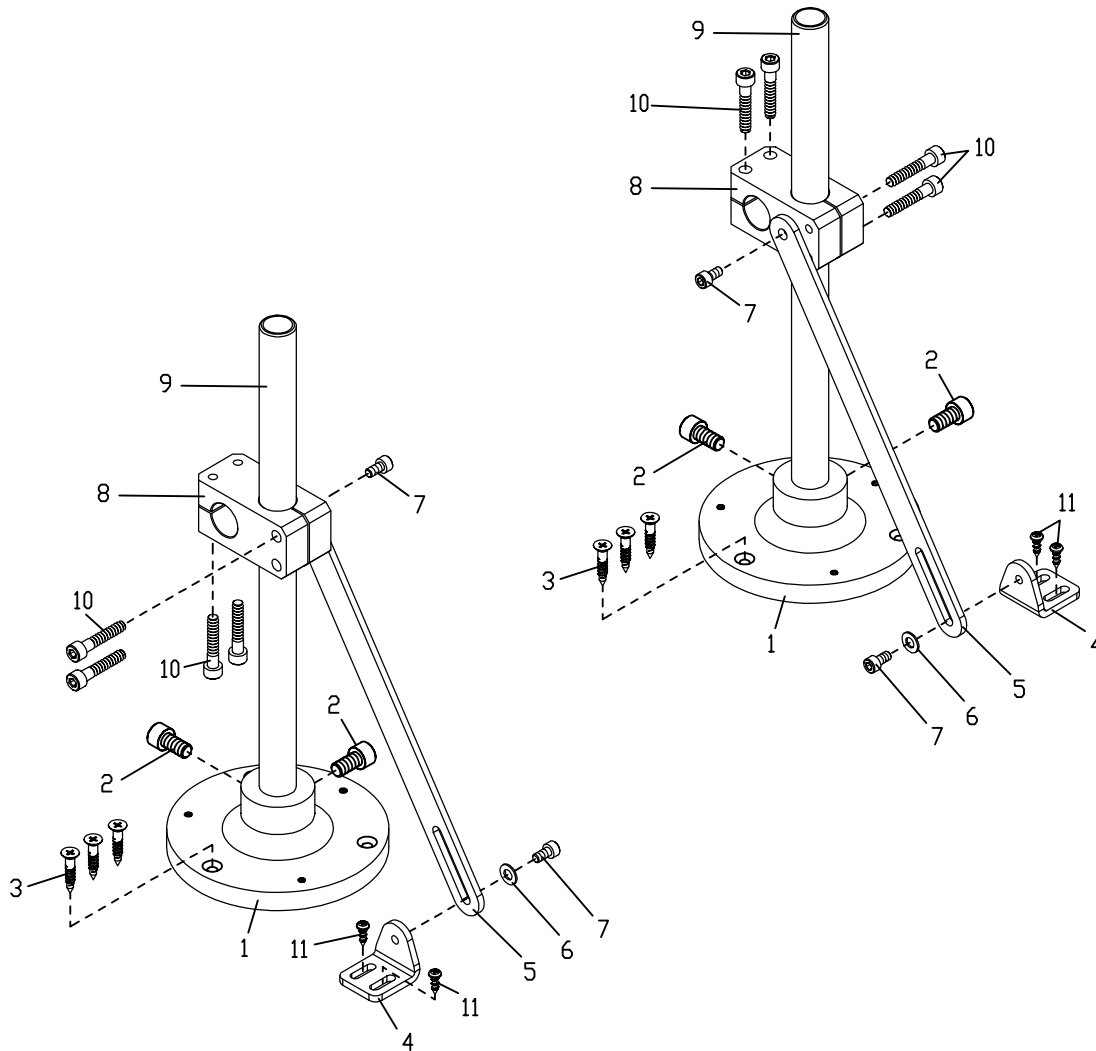
4. TCB42 氣動式切帶裝置 (一) Pneumatic Type Tape Cutting Device (一)



4. TCB42 氣動式切帶裝置 (一) Pneumatic Type Tape Cutting Device (一)

序號 Ref.No.	物料編號 Parts No.	名稱 Description	單位用量 Amt.Req.
1	4TCB420401	下刀座 Lower Knife Support -----	1
2	8MM06402010A	螺絲 Screw (SH04-44 M6-1*20) -----	14
3	4TCB420403	下刀座 Lower Knife Support -----	1
4	8MN06401800A	螺絲 Screw (AL006-01-41 M6-1*18) -----	1
5	4TCB410103	彈簧 Sping -----	1
6	4TC0010102	螺帽 Nut -----	1
7	4TCB410101	調壓螺椿 Spring Regulator -----	1
8	4TCB410112	下刀 Lower Knife -----	1
9	8MQ04281008A	螺絲 Screw (UT12A-04-05 M4-0.7*10) -----	3
10	4TCB410111	曲柄銷 Rod Pin -----	1
11	8MN05320600A	螺絲 Screw (M07-29 M5-0.8*6) -----	2
12	4TCB420412	彈簧 Sping -----	1
13	4TCB410128	氣壓缸 Cylinder -----	1
14	4UTB000305	節流閥 Speed Controller -----	2
15	4TCB41A0130	氣壓缸組 Cyliner Asm-----	1
16	4TCB410116	上刀座 Upper Knife Support -----	1
17	4TCB4101171	上刀 Knife -----	1
18	8MQ06401412A	螺絲 Screw (TCB41-01-18 M6-1*14) -----	2
19	4TCB410119	滑塊 Slide Block -----	2
20	8MM05321409A	螺絲 Screw (CT0632 M5-0.8*14) -----	6
21	4TCB410126	氣缸座 Cylinder Holder -----	1
22	8MM05321609A	螺絲 Screw (RP101-11 M5-0.8*16) -----	8
23	4TCB410123	活動塊 Movable Block -----	3
24	4TCB410124	活動塊 Movable Block -----	1
25	4TCB420425	承座 Plunger -----	1
26	4TCB420426	承座 Plunger -----	1
27	4TCB420427	支架 Knife Holder Bracket -----	2
28	8MM06403010A	螺絲 Screw (NT67-01-17 M6-1*30) -----	2
29	4TS0090105	支撐桿 Holder -----	1
30	4TCB410131	空氣管 Air Tube ($\phi 6$) -----	2
31	4TCB410144	支架 Knife Holder Bracket -----	1
32	4TCB410143	導模 Tape Guide -----	1
33	4TCB410141	護蓋 Cover -----	1
34	8MB05320710A	螺絲 Screw (CT03-02-17 M5-0.8*7) -----	6
35	4TCB410140	護蓋 Cover -----	1

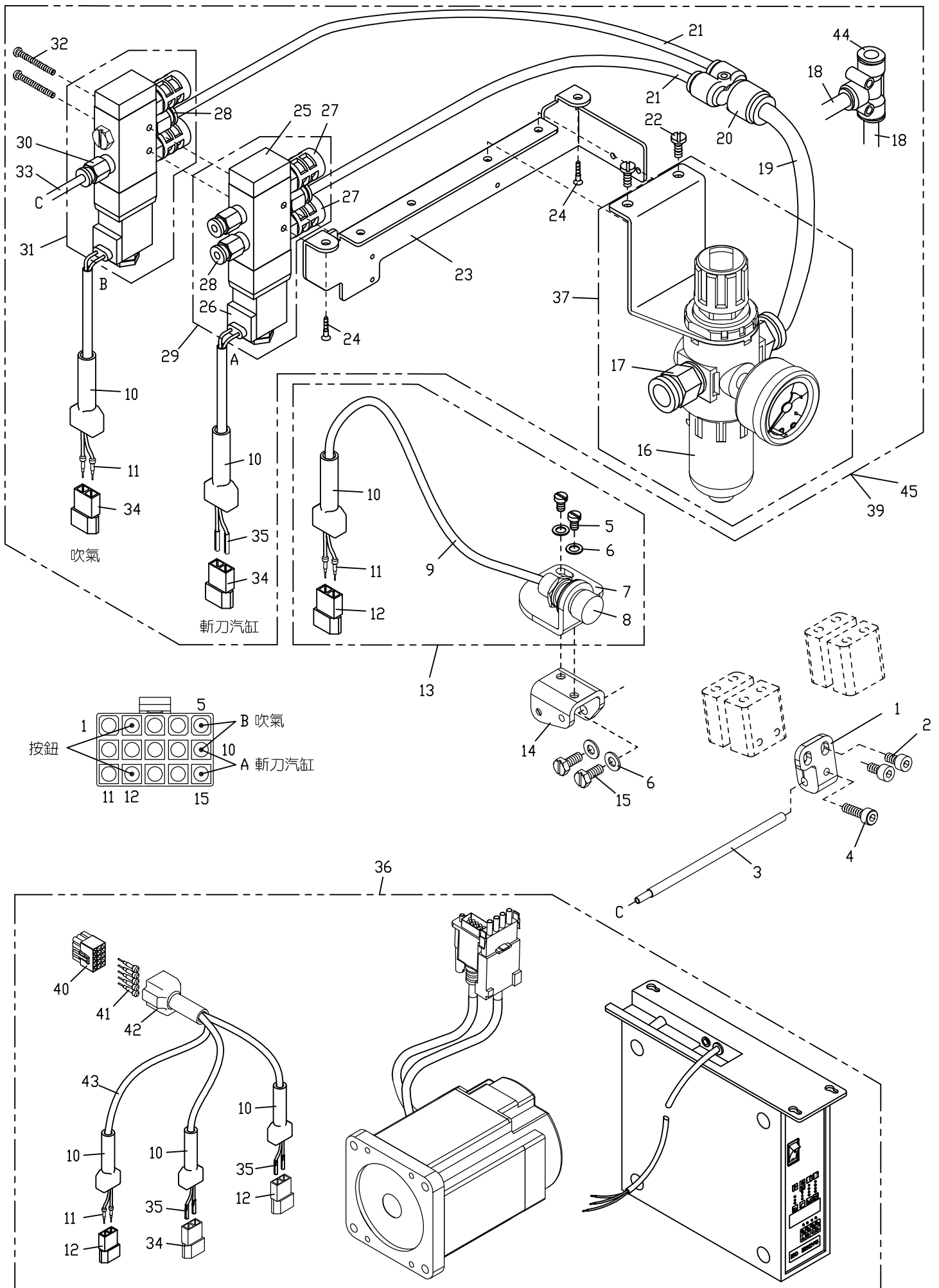
5. TCB42 氣動式切帶裝置 (二) Pneumatic Type Tape Cutting Device (二)



5. TCB42 氣動式切帶裝置 (二) Pneumatic Type Tape Cutting Device (二)

序號 Ref.No.	物料編號 Parts No.	名稱 Description	單位用量 Amt.Req.
1	4TS0090101	基座 Base -----	2
2	8MM08501613A	螺絲 Screw (C7420308 M8-1.25*16) -----	4
3	8WE37003200A	木螺絲 Wood Screw (MP001-02-37) -----	6
4	4TCB420504	支架 Knife Holder Bracket -----	2
5	4TCB420505	支架 Knife Holder Bracket -----	2
6	90PW060	墊圈 Washer -----	2
7	8MM06401010A	螺絲 Screw (MT0419 M6-1*10) -----	4
8	4TCB420508	連接塊 Connecting Block -----	2
9	4TCB420509	支撐桿 Holder -----	2
10	8MM06403210B	螺絲 Screw (RP101-31 M6-1*32) -----	8
11	8WD40001300A	木螺絲 Wood Screw (NT67-20-15) -----	4

6. TCB41 / TCB42 空壓組件 Compressed Air Components



6. TCB41 / TCB42 空壓組件 Compressed Air Components

序號 Ref.No.	物料編號 Parts No.	名稱 Description	單位用量 Amt.Req.
1	4TCB410201	支架 Knife Holder Bracket -----	1
2	8MM04280807A	螺絲 Screw (M01-24 M4-0.7*8) -----	2
3	4TCB410203	吹氣管 Blow Tube -----	1
4	8MM04281407A	螺絲 Screw (F10-03 M4-0.7*14) -----	1
5	8MB04280807K	螺絲 Screw (CTS0215 M4-0.7*8) -----	2
6	90PW040	墊圈 Washer -----	4
7	4TCB410207	支架 Knife Holder Bracket -----	1
8	4TC012030	電控開關 Push Button Switch -----	1
9	4PFE040106	電線 Cable 1150L -----	1
10	4AL013013	2PIN連接器套頭 Power Cord Cap -----	6
11	4PFE040108	2 PIN 端子(公) Power Cord -----	6
12	4AL013017	2PIN母扣連接器 Power Cord -----	3
13	4TCB41A0213	電控開關組 Push Button Switch Asm. -----	1
14	4TB04T0105	支架 Holder -----	1
15	8MK04281007A	螺絲 Screw (F02-17 M4-0.7*10) -----	2
16	4UTB0004321	調壓濾水閥 Regulator -----	1
17	4UTB010456	PT 1/4"- ϕ 8mm空氣管接頭 Connector -----	2
*18	91060101004	空氣管(ϕ 8 長 60) Air Tube -----	2
19	91060101004	空氣管(ϕ 8 長 60) Air Tube -----	1
20	4TCB410220	Y 型接頭(ϕ 8- ϕ 6*2) Y Connector -----	1
21	4AL013010	空氣管(ϕ 6 長 360) Air Tube -----	2
22	8MB05320710A	螺絲 Screw (CT03-02-17 M5-0.8*7) -----	2
23	4AL0130241	支架 Knife Holder Bracket -----	1
24	8WD45001900A	木螺絲 Wood Screw (NT67-AL013-15 -----	2
25	4PA0000315	換向閥 Electromagnetic Valve -----	2
26	4PA0000314	線圈 Solenoid (DC 24V) -----	2
27	4PA0000310	消音器 Silencer -----	4
28	4UTB000312	PT 1/8"- ϕ 6mm空氣管接頭 Connector -----	4
29	4TCB41A0229	換向閥組 Electromagnetic Valve Asm. -----	1
30	4PA0000309	RT 1/8"- ϕ 4mm空氣管接頭 Connector -----	1
31	4TCB41A0231	換向閥組 Electromagnetic Valve Asm. -----	1
32	8MC03204005A	螺絲 Screw (TC012-03 M3-0.5*40) -----	2
33	4TCB410228	空氣管 Air Tube (ϕ 4長1000) -----	1
34	4PFE040107	2PIN公扣連接器 Power Cord -----	3
35	4AL013015	端子(母) Power Cord -----	6
36	-----	賀欣馬達控制箱組 Moter And Control Box Asm. (i60-4-MT-220) -----	1
37	4UTB00A04582	調壓濾水閥組 Regulator Asm. -----	1
38	-----	-----	-
39	4TCB41A0239	空壓組件 Compressed Air Componets -----	1
40	4AL013016	15PIN連接器(公) Power Cord -----	1
41	4AL013014	端子(公) Power Cord -----	5
42	4AL013012	15PIN連接器套頭 Power Cord Cap -----	1
43	4TC012032	電線 Cable 350L -----	3
*44	4TCB410244	T 型接頭(ϕ 8*3) T Connector -----	1
*45	4TCB41A0245	空壓組件 Compressed Air Componets -----	1

* : TCB41 + UT 系列用